



# CANOPY INSTALLATION INSTRUCTIONS

This document will cover all items needed and tools  
required for proper installation.



# MERIDIAN

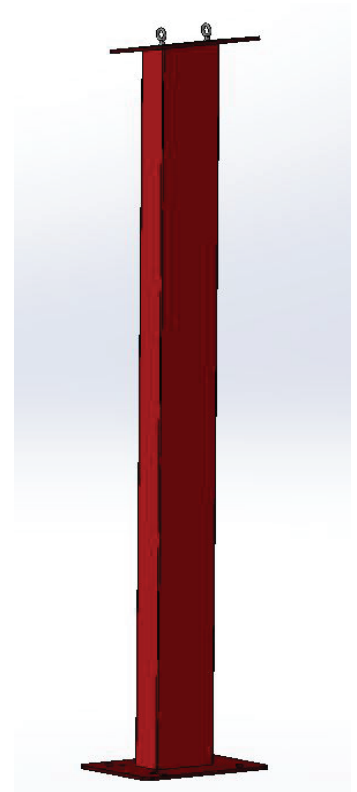
## Canopy Installation

### Please read all information first

- Unpackage your items and inspect for shipping damage.
- Review your planned site for access of forklift or truck mounted jib crane.
- Using the template provided, place onto surface in the position you want your menu board to be anchored in and drill the four holes into your substrate.
- Clean out the holes of debris and insert the studs securely, leaving approx. 4" above ground.
- Place one nut on each of the four anchor studs approx.. 5" above ground. These will be used for leveling.
- Connect your lifting device to the two eye bolts installed on the beam portion of the canopy.

**NOTE: Make sure your incoming power and data lines are free so they can travel up the rear of the main beam to connection terminal.**

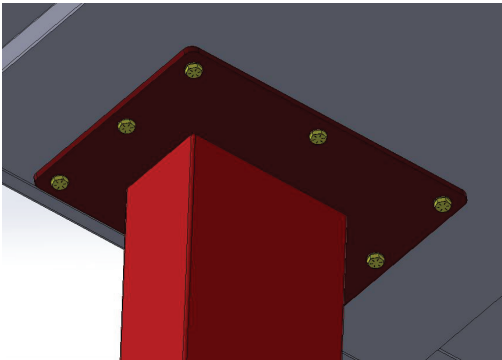
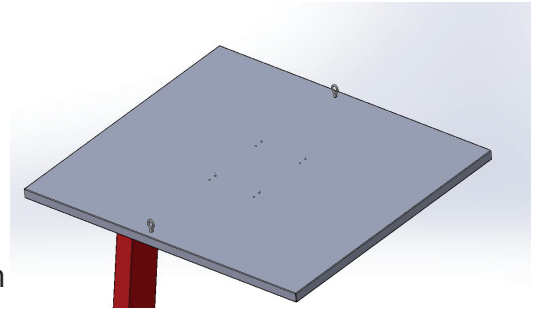
- Lift via your supplied machine and set over studs, down onto the four nuts from previous step.
- Place four more nuts on top of the base plate and leave them a bit loose to allow for leveling.
- Release tension on the lifting machine and using the nuts below the base plate, adjust them each, up or down to create a level base plate.
- Tighten down the above nuts to your specified torque ratings.
- With the main beam installed and tightened down. Remove the lifting device.
- Remove the lifting eye bolts.



# MERIDIAN

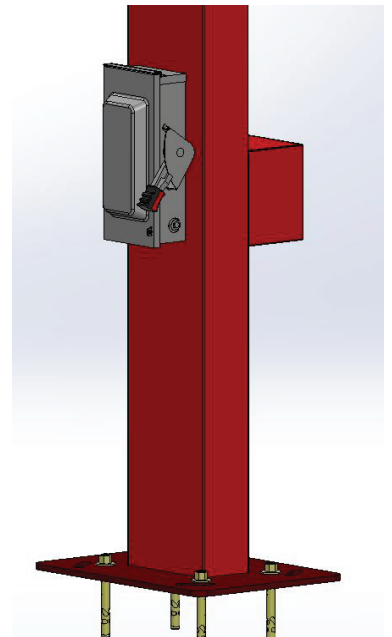
## Canopy Installation

- Next, connect the lifting device to the two, eye-bolts installed on the top of the canopy.
- Lift and set onto of the main beam, aligning the bolts holes with the mating holes in the canopy topper.



- Using the hardware supplied, install the washers and bolts and snug them down.
- Torque them done to your specified specs and remove lifting device.
- Connect the wires running from the canopy to the main beam and tuck in excess cabling.

- Connect the incoming power and data to the disconnect, located on the rear of the beam.
- Turn circuit breakers on and test the units for proper functions.
- Remove the lifting eye bolts and replace with provided cap plugs. (to prevent water from dripping)
- Once verification is complete, your menu boards are ready for use.
- Please contact Meridian Service Department for any concerns or issues.
- Enjoy your new canopy and thank you!



### QUALITY + CERTIFICATION

Meridian promises a level of quality that goes beyond the expected. We control every step of our process from concept to completion, overseeing quality, design, cost and timelines. Many of our products can be UL Listed through UL self-certify and our processes are ISO 9001:2015 certified.



## Corporate Headquarters

312 S. Pine Street,  
Aberdeen, NC 28315

+1 866-454-6757  
[Sales@mzero.com](mailto:Sales@mzero.com)

[Meridiankiosks.com](http://Meridiankiosks.com)

